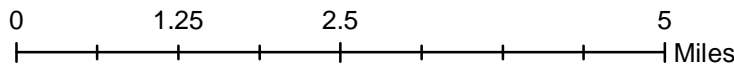
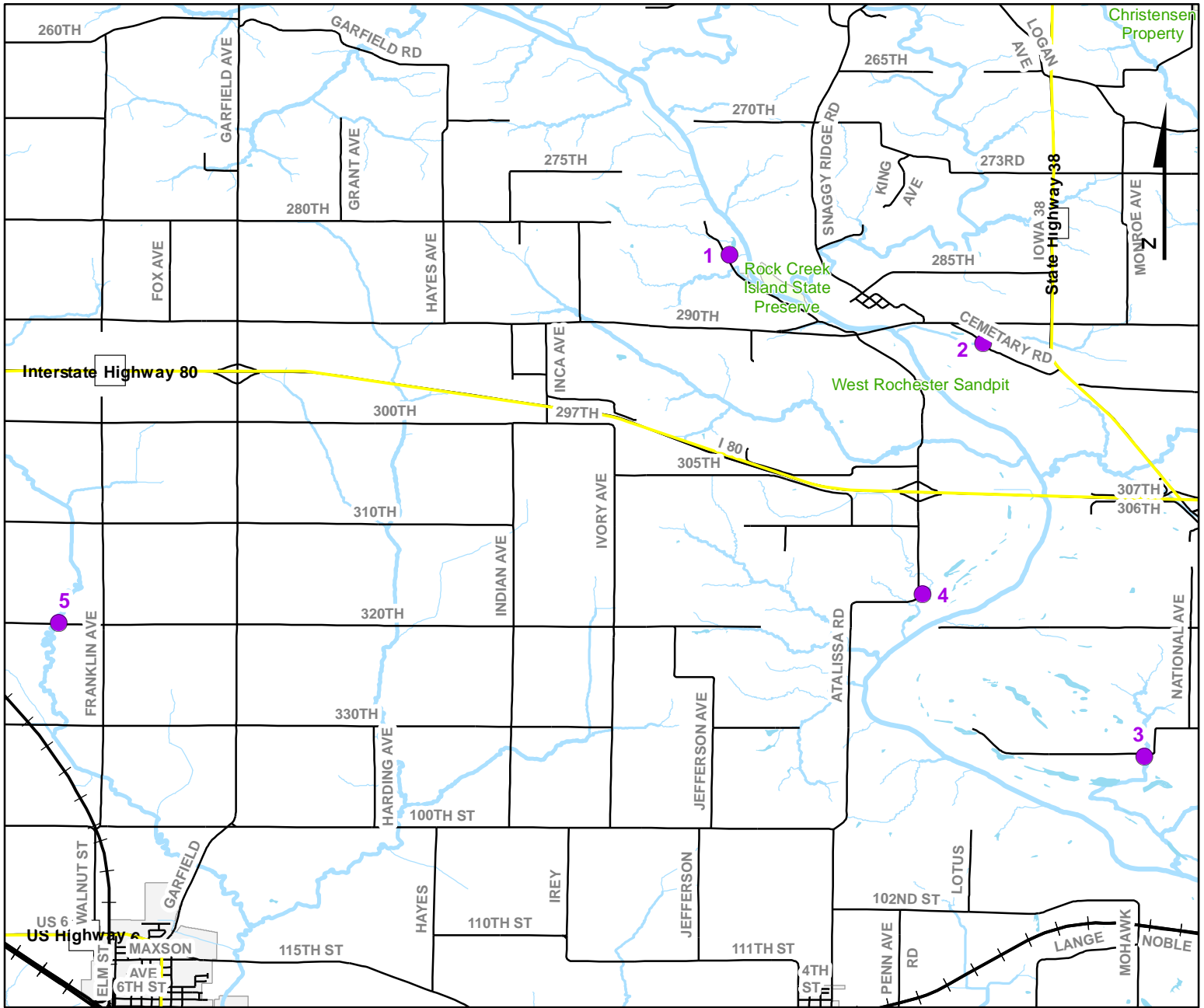


Volunteer Wildlife Monitoring Program (VWMP) Frog and Toad Survey



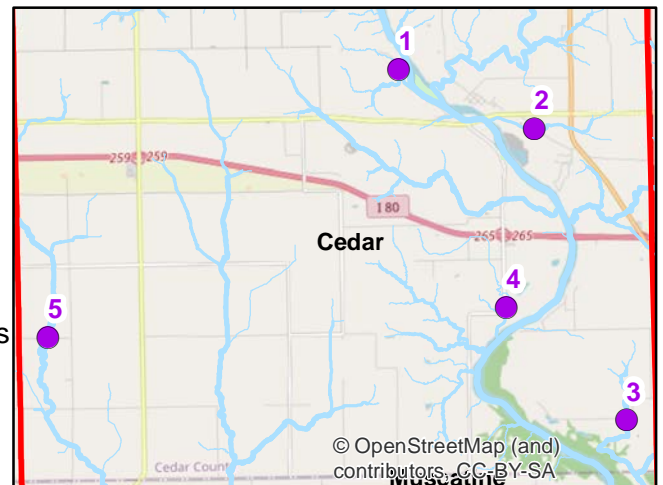
Route ID: 111 County: Cedar



DNR
Volunteer Wildlife Monitoring Program

Legend

- Trails
- Survey Stops

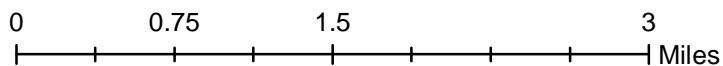
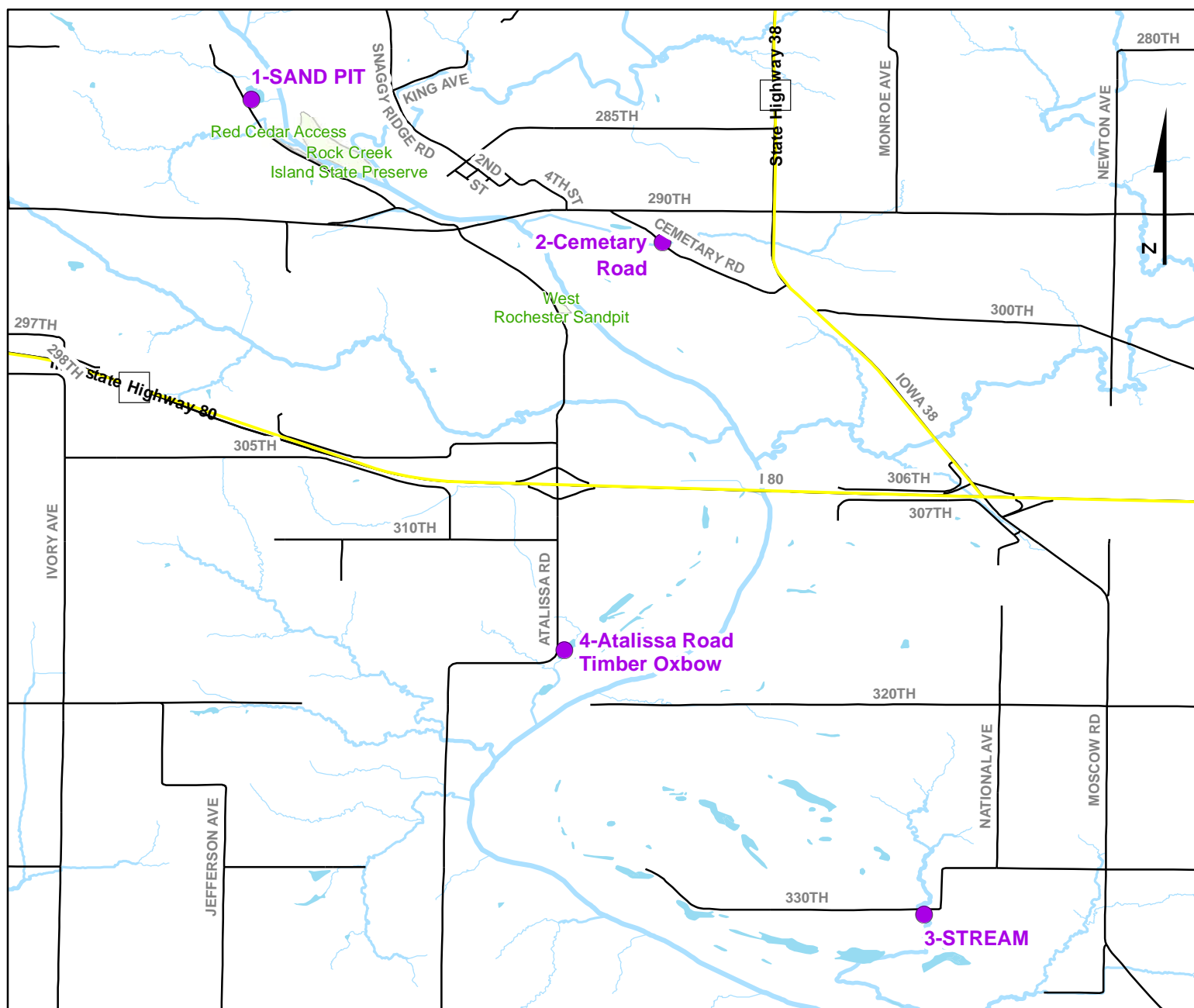


© OpenStreetMap (and contributors), CC-BY-SA

Volunteer Wildlife Monitoring Program (VWMP) Frog and Toad Survey

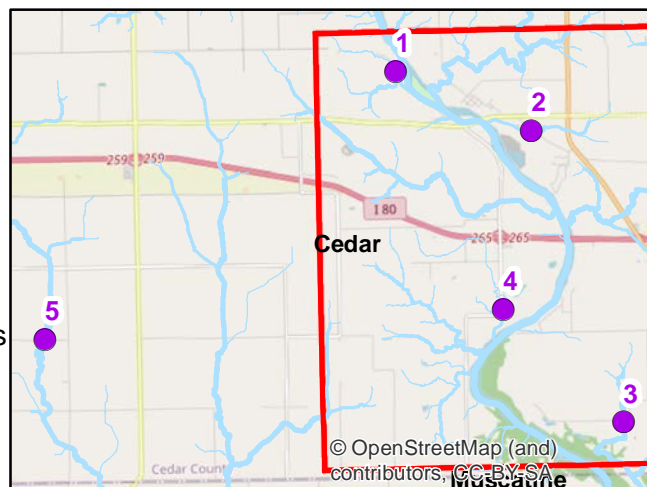


Route ID: 111 County: Cedar



Legend

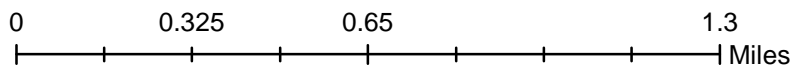
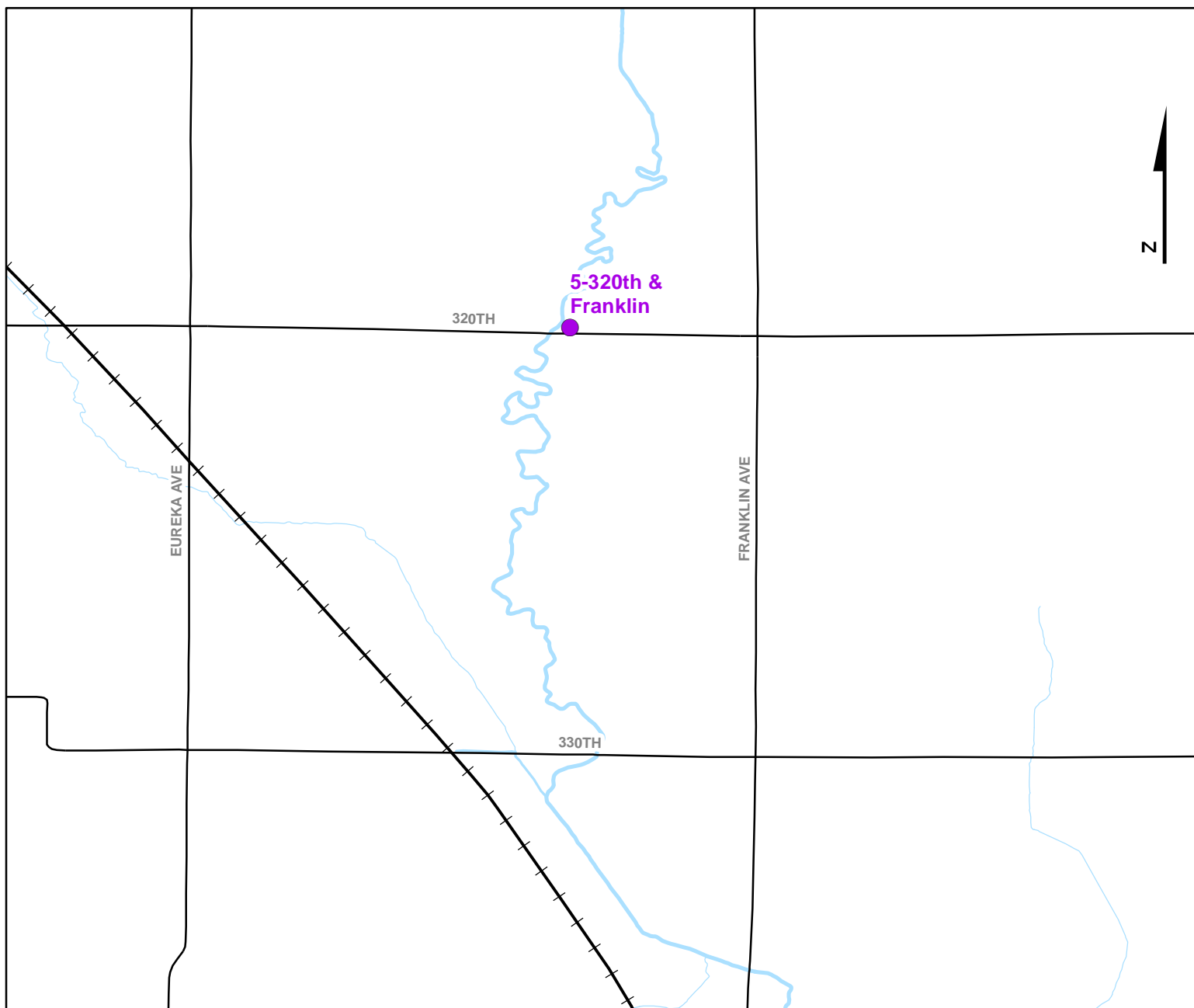
- Trails
- Survey Stops



Volunteer Wildlife Monitoring Program (VWMP) Frog and Toad Survey

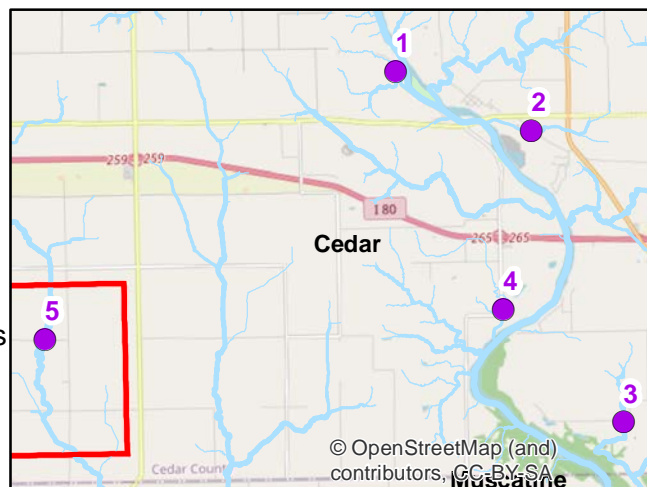


Route ID: 111 County: Cedar



Legend

- Trails
- Survey Stops



VOLUNTEER WILDLIFE MONITORING PROGRAM

Survey Route Description

Route 111

Name

Address

Phone

E-mail

Site No	Site Name	County	T	R	S	Q	Latitude	Longitude	Wetland Type
1	SAND PIT	Cedar	79N	3W	3		41.6801600	-91.1789180	Permanent Open Water
	Description:	West Rochester Sand Pit							
2	Cemetary Road	Cedar	79N	03W	12		41.6674950	-91.1425620	Hab Type Not recorded
3	STREAM	Cedar	79N	2W	31		41.6080670	-91.1193970	Open Riverine
4	Atalissa Road Timber Oxbow	Cedar	79N	03W	24		41.6314230	-91.1512520	Ephemeral Flooded Area
	Description:	Site is on east side of Atalissa Road right before it curves to the west.							
5	320th & Franklin	Cedar	79N	04W	23		41.6273120	-91.2752140	Hab Type Not recorded
	Description:	Just west of the intersection of 320th and Franklin on 320th. Stream habitat or possibly wet meadow or fen?							